

**ROLLER FEEDER TYPE830
(A454)**

PARTS CATALOG

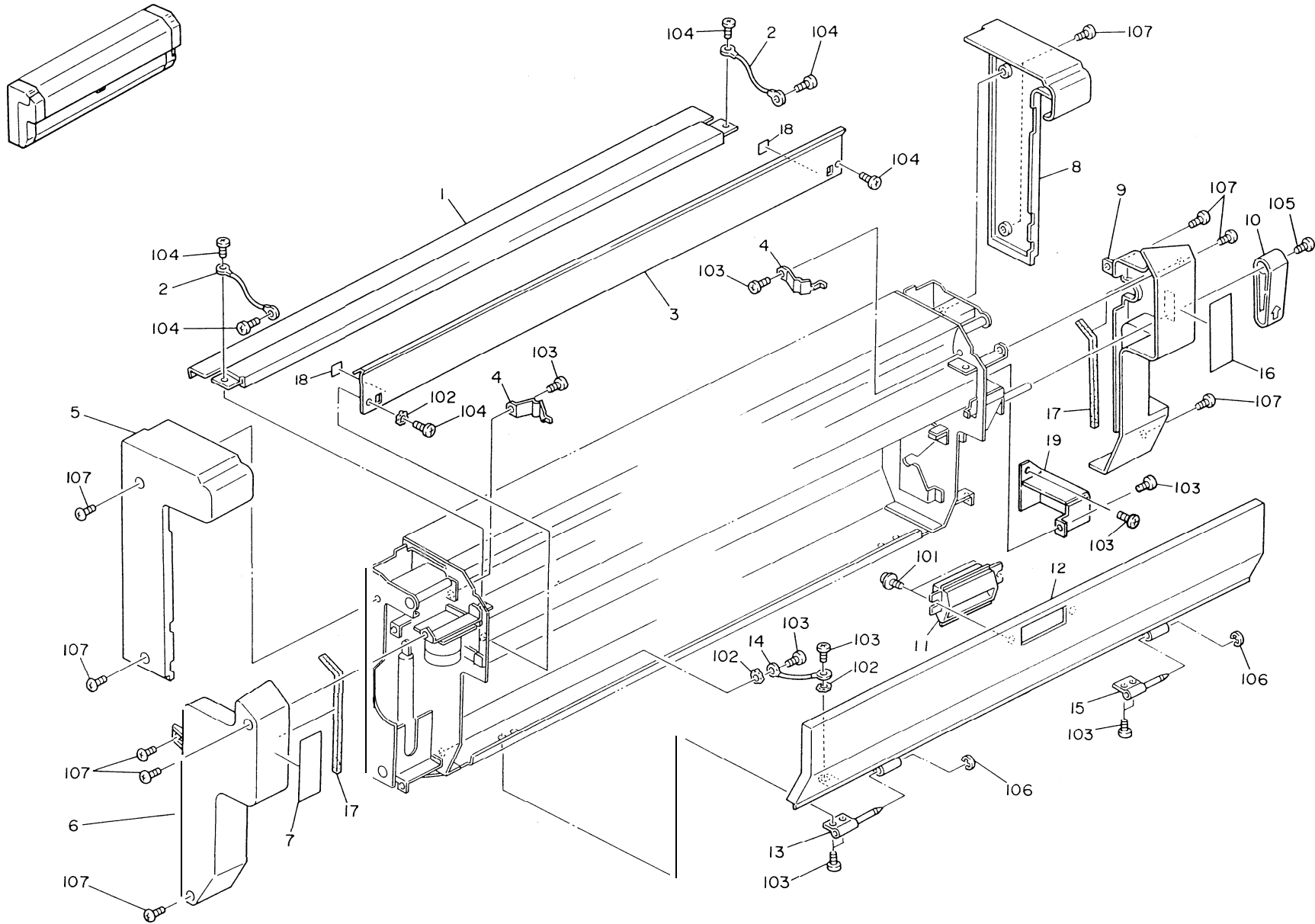
INTRODUCTION

This chapter instructs you the numbers and names of this parts on this machine.

INDEX to PARTS CATALOG

1. Exterior 1 (A454)	2
2. Exterior 2 (A454)	4
3. Paper Spool Unit (A454)	6
4. Cutter Unit (A454)	8
5. Frame Section (A454)	10
6. Drive and Electrical Section (A454)	12
7. Joint Frame Section 1 (A454)	14
8. Joint Frame Section 2 (A454)	16
9. Main Board (A454)	18
10. DC Harness (A454)	20
11. Decal and Document (A454)	22
Parts Index	25

1. EXTERIOR 1 (A454)



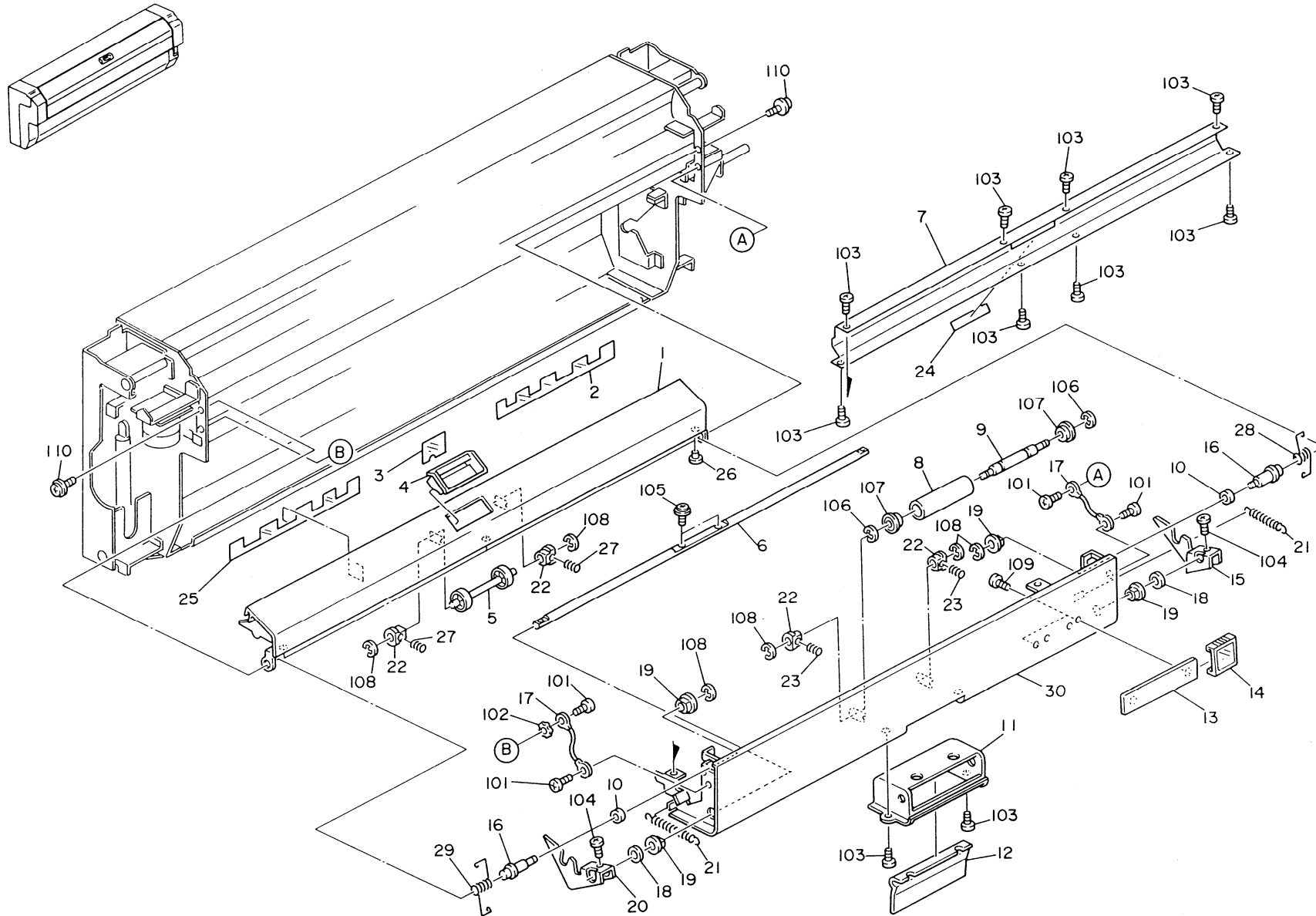
1. EXTERIOR 1 (A454)

Index No.	Part No.	Description	Q'ty Per Assembly
1	A454 1105	Upper Cutter Cover	1
2	A454 5585	Grounding Wire	2
3	A454 1071	Lower Cutter Cover	1
4	A454 5477	Spring Plate	2
5	A454 1263	Left Rear Cover	1
6	A454 2272	Left Front Cover	1
7	A454 1393	Decal - Misfed Removal	1
8	A454 1265	Right Rear Cover	1
9	A454 2277	Right Front Cover	1
10	AG05 0017	Grip	1
11	AG05 1057	Front Cover Grip	1
12	A454 1252	Front Cover	1
13	AG06 1010	Left Hinge	1
14	A454 5171	Grounding Wire	1
15	AG06 1011	Right Hinge	1
16	A454 1391	Decal - Loading Paper	1
17	A454 1279	Cushion Seal - 10x18x160	2
18	A453 2858	Mylar Seal - 20x20	2
19	A454 5596	Reinforcement Plate	1

Index No.	Part No.	Description	Q'ty Per Assembly
101	0951 4006B	Philips Screw With Washer - M4x6	
102	0705 0040C	Toothed Washer - M4	
103	08025169	Tapping Screw - M4x6	
104	08025175	Tapping Screw - M4x1 2	
105	0344 0080F	Philips Truss Head Screw - M4x8	
106	0720 0020Z	Retaining Ring - M2	
107	08025094	Tapping Truss Head Screw - M4x8	



2. EXTERIOR 2 (A454)

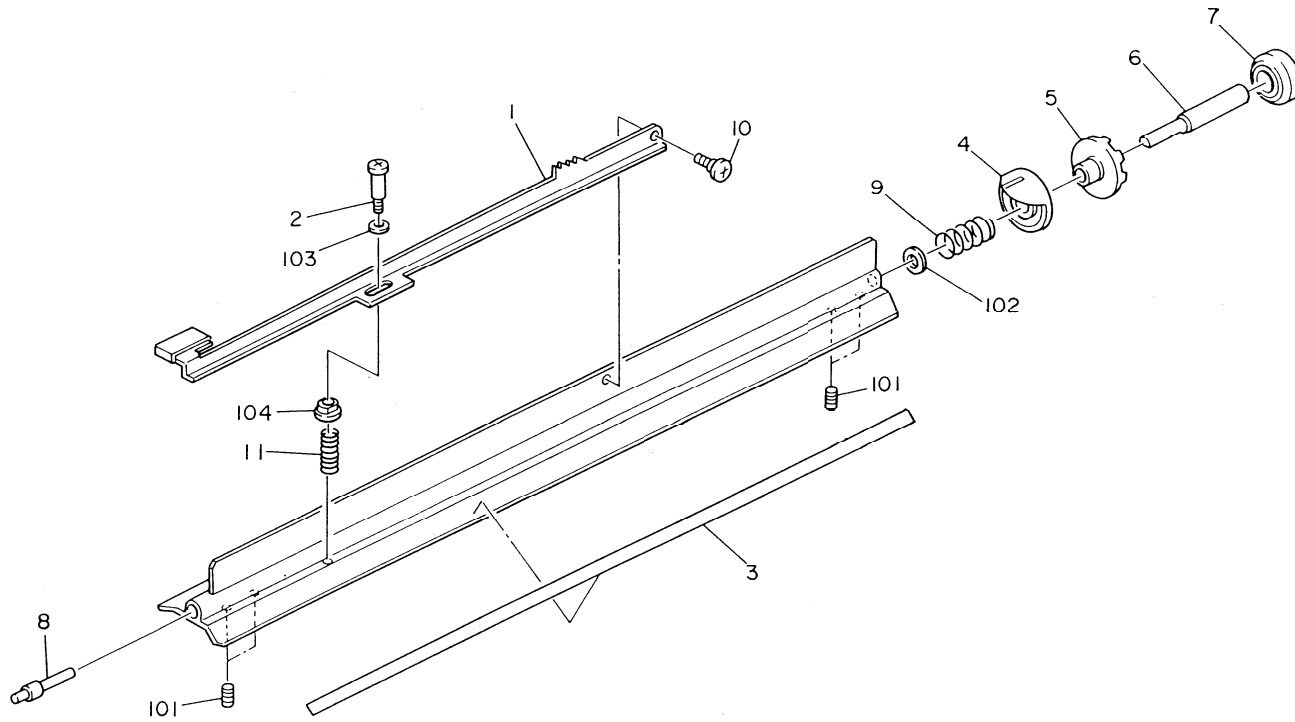
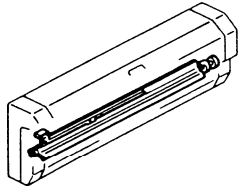


2. EXTERIOR 2 (A454)

Index No.	Part No.	Description	Q'ty Per Assembly
1	A454 5454	Guide Plate	1
2	A454 4425	Paper Guide Mylar - Right	1
3	A454 4423	Paper Guide Mylar - Center	1
4	AG05 1038	Grip - Toner Cartridge Cover	1
5	AF02 2034	Exit Roller	1
6	AA14 0257	Drive Grip Shaft	1
7	A454 2565	Guide Plate - Paper Feed	1
8	AF02 2033	Paper Feed Roller	1
9	AA14 0256	Paper Feed Roller Shaft	1
10	A454 1172	Collar - M6	2
11	A454 2573	Drive Grip Cover	1
12	AG05 0039	Drive Grip	1
13	A454 2592	Paper Size Marker	1
14	A453 2875	Cursor - Paper Size Indicator	1
15	A454 2578	Right Hook	1
16	AA14 3406	Stud - M4	2
17	A454 6585	Grounding Wire	2
18	A454 1172	Collar - M6	2
19	50530447	Bushing - 6mm	4
20	A454 2579	Left Hook	1
21	AA06 0226	Spring - Front Cover Grip	2
22	54422751	Bushing - Upper Registration Roller	4
23	AA06 3120	Spring - Paper Feed Roller	2
24	A454 2546	Decal - Front Cover	1
25	A454 4424	Paper Guide Mylar - Left	1
26	A023 3089	Cover Cushion	3
27	52054527	Spring - Exit	2
28	AA06 6050	Right Torsion Spring	1
29	AA06 6046	Left Torsion Spring	1
30	A454 2548	Base Plate - Paper Feed	1

Index No.	Part No.	Description	Q'ty Per Assembly
101	08025175	Tapping Screw - M4x1 2	
102	0705 0040C	Toothed Washer - M4	
103	08025169	Tapping Screw - M4x6	
104	0313 0060B	Philips Pan Head Screw - M3x6	
105	0951 3008B	Philips Screw With Flat Washer-M3x8	
106	0720 0060Z	Retaining Ring - M6	
107	07401308	Ball Bearing - 8x.28x9mm	
108	0720 0040Z	Retaining Ring - M4	
109	0314 0040B	Philips Pan Head Screw - M4x4	
110	0951 4006B	Philips Screw With Washer - M4x6	

3. PAPER SPOOL UNIT (A454)

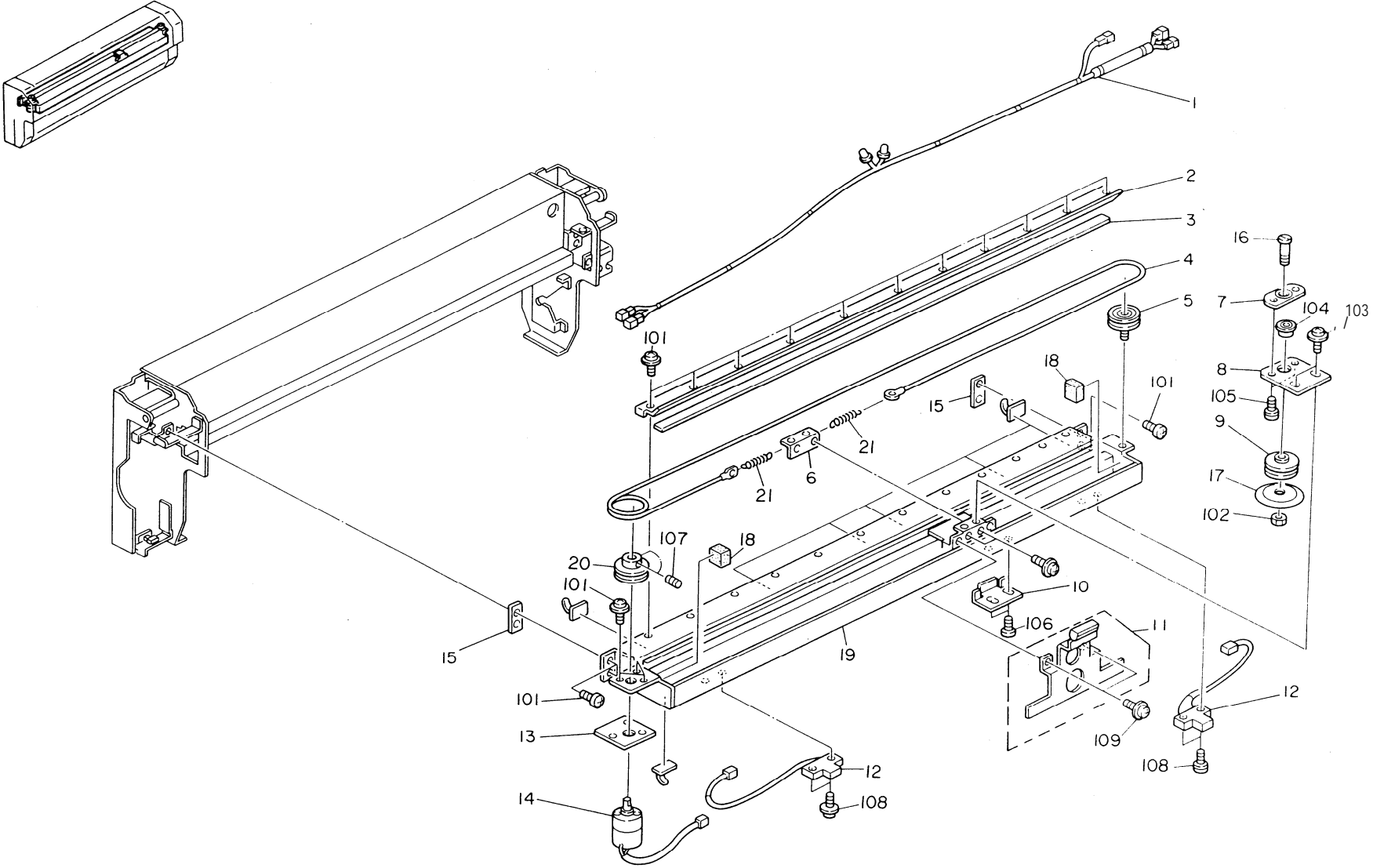


3. PAPER SPOOL UNIT (A454)

Index No.	Part No.	Description	Qty Per Assembly
*	A454 2701	Paper Spool Unit	1
1	A454 2717	Lever - Paper Spool Unit	1
2	AA14 3253	Pin - Lever - Paper Spool Unit	1
3	A454 2720	Decal - Paper Spool Scale - A4	1
4	54143533	Spindle Disk	1
5	A454 2707	Brake - Paper Spool Unit	1
6	AA14 8066	Shaft - Paper Spool Unit - Right	1
7	AA13 2100	Collar - Paper Spool Unit	1
8	AA14 8060	Left Shaft - Paper Spool	1
9	54143534	Brake Spring	1
10	54131882	Stepped Screw	1
11	AA06 31 39	Lever Spring	1

Index No.	Part No.	Description	Qty Per Assembly
101	0575 0050E	Hexagon Headless Set Screw - M5x5	
102	08075053	Washer	
103	0701 0050F	Washer - M5	
104	08053384	Bushing - 5mm	

4. CUTTER UNIT (A454)

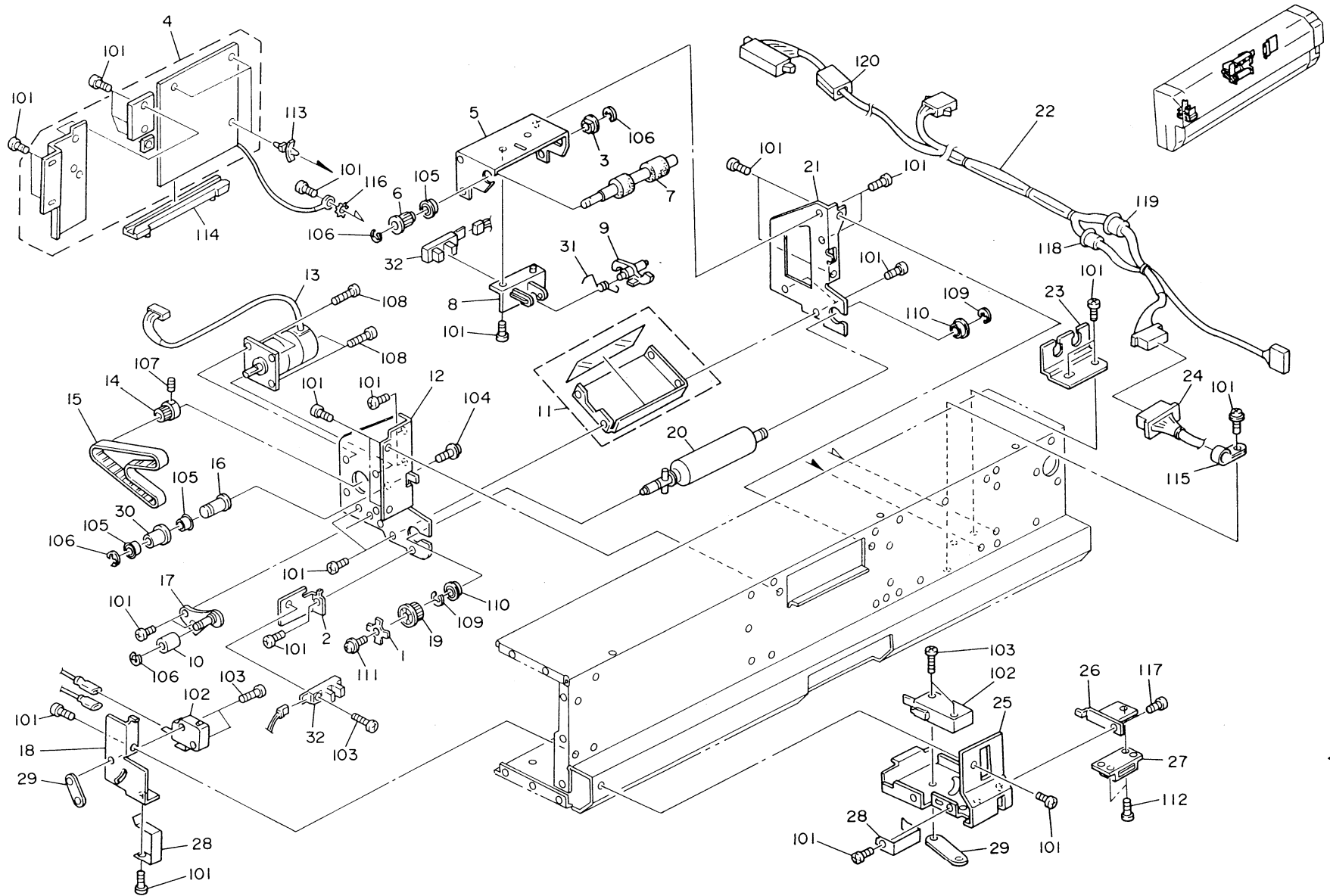


4. CUTTER UNIT (A454)

Index No.	Part No.	Description	Q'ty Per Assembly
*	AJ03 0003	Cutter Unit	1
1	A454 5307	Cutter Unit Harness	1
2	A454 1312	Support Plate - Plate Cutter	1
3	A454 1326	Plate Cutter	1
4	A454 1424	Cutting Wire	1
5	A454 1330	Idle Pulley	1
6	A454 1431	Wire Hook	1
7	A454 1314	Support Plate	1
8	A454 1421	Cutter Spring Plate	1
9	A454 1422	Rotating Cutting Pulley	1
10	A454 1434	Cutter Holder	1
11	A454 1347	Cutter Handle Plate	1
12	A454 5305	Photosensor-EE-SB5M	1
13	A454 1338	Cutter Motor Sheet	1
14	A454 5308	Motor DC 5.76W	1
15	A454 1082	Cutter Unit Sheet - 16x34	2
16	A454 1340	Cutter Screw - M6	1
17	A454 1423	Rotating Cutter	1
18	A454 1334	Rubber Pad	1
19	A454 1425	Cutter Rail Ass'y	1
20	A454 1442	Cutter Motor Pulley	1
21	A454 1443	Wire Spring	1

Index No.	Part No.	Description	Q'ty Per Assembly
101	0954 3008B	Philips Screw - M4x8	1
102	071200606	Hexagon Nut - M6	1
103	095430056	Philips Screw With Washer - M3x5	1
104	08053145	Ball Bearing - 6x12x4mm	1
105	095030086	Sem,s Screw - M3x8	1
106	0313 0060B	Philips Pan Head Screw - M3x6	1
107	0573 0040E	Hexagon Headless Set Screw - 03x4	1
108	0951 3010B	Philips Screw With Flat Washer - M3x1	1
109	0353 0060Z	Screw - M3x6	1
110	11050109	Cord Keep	

5. FRAME SECTION (A454)

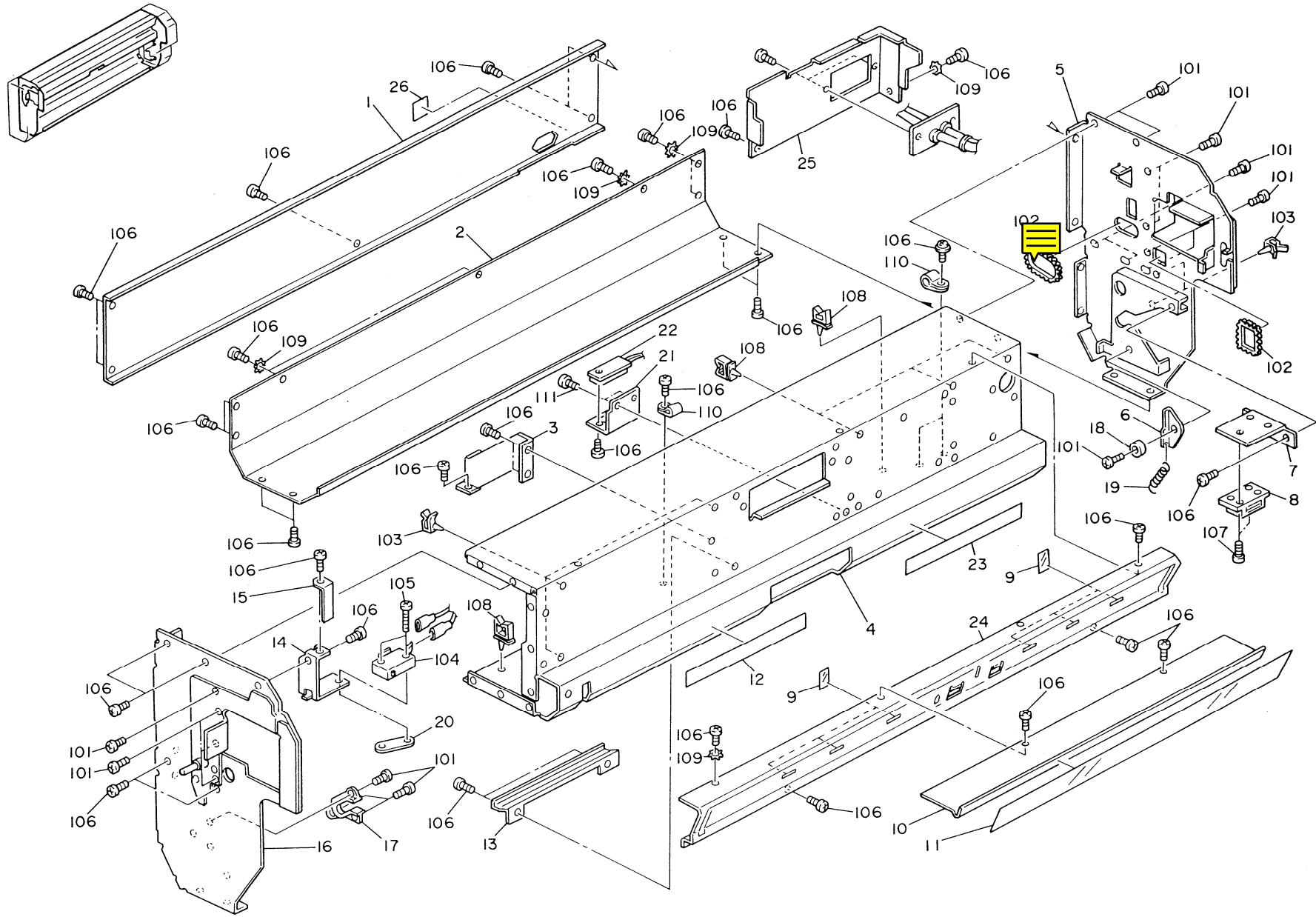


5. FRAME SECTION (A454)

Index No.	Part No.	Description	Q'ty Per Assembly
1	A454 1168	Encoder	1
2	A454 1180	Sensor Bracket	1
3	5053 0447	Bushing - 6mm	1
4	A454 5041	Main Control Board	1
5	A454 1160	Drive Stay	1
6	A454 2116	Timing Pulley - 24Z	1
7	AF04 0046	Exit Drive Roller	1
8	A454 1162	Sensor Brachet	1
9	AA11 1006	Actuator	1
10	AB03 0098	Belt Tightener	1
11	A454 1155	Scraper Bracket	1
12	A454 1152	Left Base Plate	1
13	A454 5151	Motor - 6V 1.2A	1
14	AB03 0168	Timing Pulley - 16Z	1
15	AA04 3049	Timing Belt - 250MXL	1
16	AA14 3211	Idler Shaft	1
17	A454 1185	Tightener	1
18	A454 5566	Microswitch Bracket	1
19	AB03 0131	Timing Pulley - 48Z	1
20	AF03 1005	Drive Roller - Paper Feed	1
21	A454 1153	Right Base Plate	1
22	A454 5400	Relay Harness	1
23	A454 5410	Coard Bracket	1
24	A454 5320	Main Control Board Harness	1
25	A454 5568	Microswitch Bracket	1
26	A454 5576	Magnet Catch Bracket	1
27	C400 3159	Magnet Catch	1
28	A454 5570	Spring Plate	2
29	50560509	Nut Plate - Microswitch	2
30	AF02 2031	Idler Roller - M22	1
31	AA06 6045	Actuator Spring	1
32	A009 5520	Photointerruptor	2

Index No.	Part No.	Description	Q'ty Per Assembly
101	0802 5169	Tapping Screw - M4x6	
102	1204 2184	Microswitch - 16AIAC250V	
103	0313 0140B	Philips Pan Head Screw - M3x14	
104	0951 4006B	Philips Screw With Washer - M4x6	
105	0741 3806	Ball Bearing - 6xl 3x5mm	
106	0720 0040Z	Retaining Ring - M4	
107	0573 0040E	Hexagon Headless Set Screw - M3x4	
108	08025175	Tapping Screw - M4xl 2	
109	0720 0060Z	Retaining Ring - M6	
110	07413808	Ball Bearing - 8x1 6x5mm	
111	0951 3006B	Philips Screw With Fiat Washer-M3x6	
112	0313 0060B	Philips Pan Head Screw - M3x6	
113	11050157	Lock Supportt	
114	10050812	Support Rail - Main Board	
115	11050011	Nylon Clip - 8N	
116	0705 0040C	Toothed Washer - M4	
117	08025169	Tapping Screw - M4x6	
118	11060250	Cord Stopper - 115V	
119	11060289	Bushing - SR-5N-I	
120	16070576	Sleeve Coae - SFC-8	

6. DRIVE AND ELECTRICAL SECTION (A454)



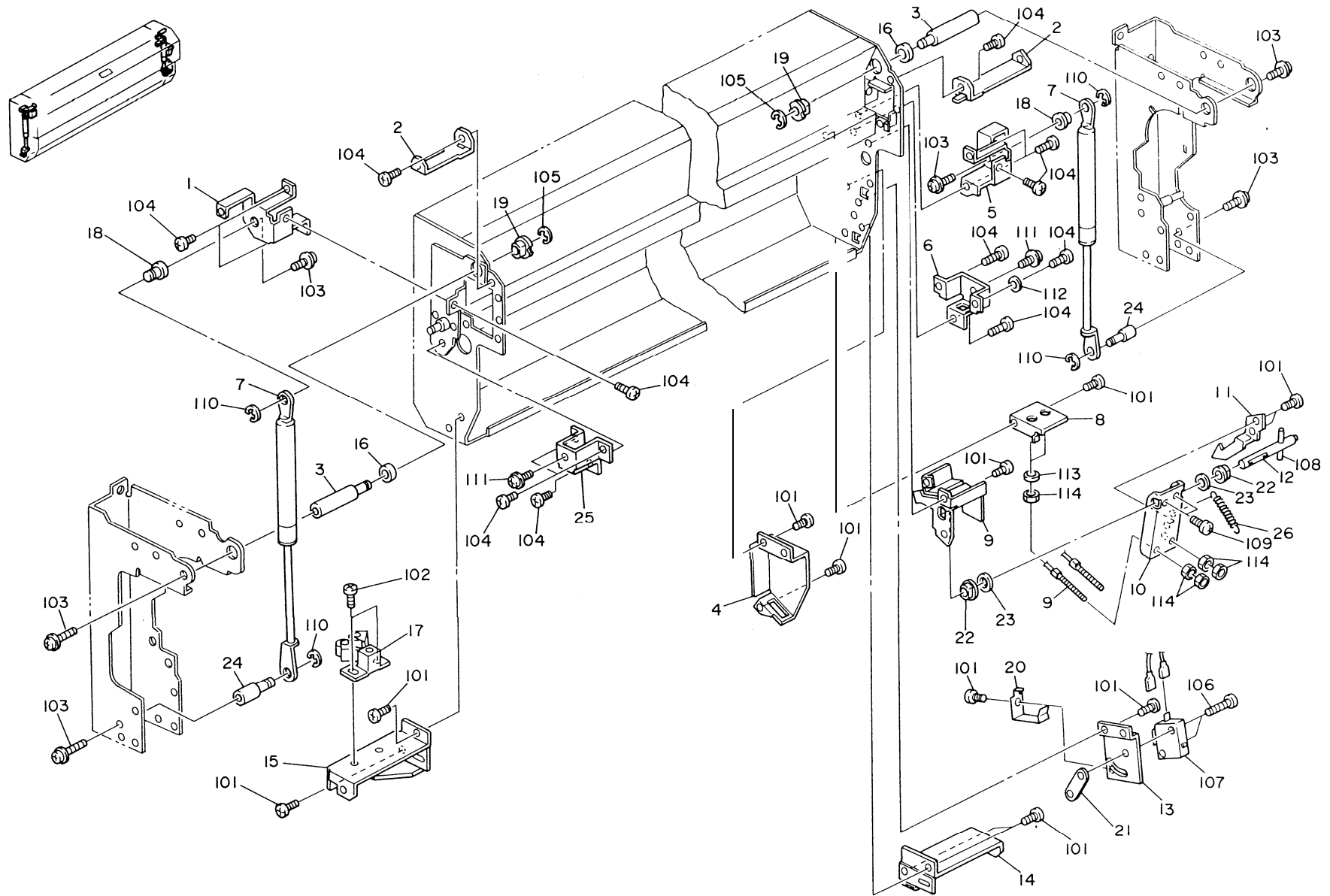
6. DRIVE AND ELECTRICAL SECTION (A454)

Index No.	Part No.	Description	Q'ty Per Assembly
1	A454 1226	Rear Cover - 220/240V	1
2	A454 1068	Cover	1
3	A454 1077	Base Supporting Plate	1
4	A454 1052	Bottom Plate	1
5	A454 1056	Right Side Plate	1
6	5414 3536	Stopper Plate	1
7	A454 5576	Magnet Catch Bracket	1
8	C400 3159	Magnet Catch	1
9	A454 5453	Guide Shsst - 0.1x20x20	6
10	A454 4421	Guide Brackt	1
11	A454 4422	Guide Mylar	1
12	A454 1410	Left Scale Decal - A4	1
13	A454 1083	Harness Guide Plate	1
14	A454 6565	Switch Bracket	1
15	A454 6571	Switch Actuator	1
16	A454 1055	Left Side Plate	1
17	A454 1065	Bushing - Paper Spool	1
18	AA13 2093	Collar - Lever Stopper	1
19	54143537	Paper Spindle Spring	1
20	50560509	Nut Plate - Microswitch	1
21	A454 5558	Bracket - Paper End Sensor	1
22	A454 5105	Paper End Sensor	1
23	A454 1167	Right Scale Decal - A4	1
24	A454 5452	Exit Guide Plate	1
25	A454 1361	Right Lower Rear Cover	1
26	A912 2681	Caution Decal - English/French	1

Index No.	Part No.	Description	Q'ty Per Assembly
101	08025175	Tapping Screw - M4x12	
102	11060103	Universal Bushing	
103	11050087	Clamp	
104	12042184	Microswitch - 16A/Ac250V	
105	0313 0140B	Philips Pan Head Screw - M3x14	
106	08025169	Tapping Screw - M4x6	
107	0313 0060B	Philips Pan Head Screw - M3x6	
108	11050197	Wire Saddle	
109	0705 0040C	Toothed Washer - M4	
110	11050011	Nylon Clip - 8N	
111	0313 0080B	Philips Pan Head Screw - M3x8	



7. JOINT FRAME SECTION 1 (A454)

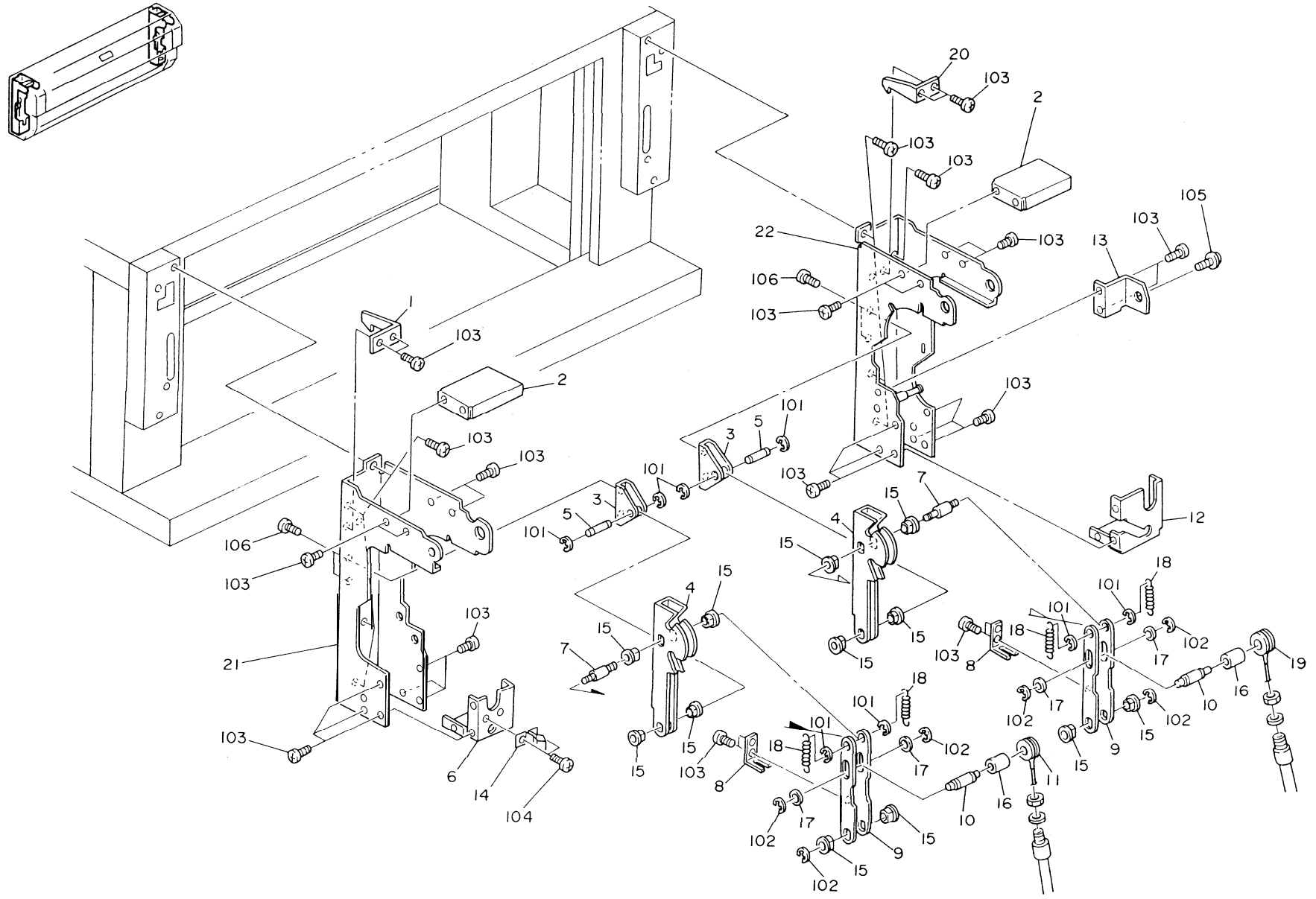


7. JOINT FRAME SECTION 1 (A454)

Index No.	Part No.	Description	Q'ty Per Assembly
1	A454 6066	Bracket - Left Gas Spring - Upper	1
2	A454 1297	Bracket	2
3	AA14 3210	Support Shaft	2
4	A454 5572	Microswitch Cover	1
5	A454 6067	Bracket - Right Gas Spring - Upper	1
6	A454 6074	Right Bracket - Upper Mounting Arm	1
7	A454 6102	Gas Spring	2
8	A454 6086	Wire Bracket - Side Plate	1
9	A454 6094	Grip Bracket	1
10	A454 6092	Lock Wire Arm	1
11	A454 6107	Lock Hook	1
12	AA14 3209	Grip Shaft	1
13	A454 5567	Microswitch Bracket	1
14	A454 1087	Right Stopper Bracket	1
15	A454 1079	Left Stopper Bracket	1
16	AA13 2098	Collar	2
17	50130568	Roller Catch	1
18	AA14 3207	Gas Spring Shaft - Upper	2
19	54143327	Bushing - 12x1 8x8	2
20	A454 5570	Spring Plate	1
21	50560509	Nut Plate - Microswitch	1
22	53041639	Bushing - 8mm	2
23	AA13 2097	Spacer	2
24	AA14 3208	Gas Spring Shaft - Lower	2
25	A454 6073	Left Bracket - Upper Mounting Arm	1
26	AA06 0225	Grip Spring	1

Index No.	Part No.	Description	Q'ty Per Assembly
101	08025169	Tapping Screw - M4x6	
102	0313 0060B	Philips Pan Head Screw - M3x6	
103	0951 5008B	Philips Screw With Washer - M5x8	
104	08025175	Tapping Screw - M4x1 2	
105	0720 0080Z	Retaining Ring - M8	
106	0313 0140B	Philips Pan Head Screw - M3x1 4	
107	12042184	Microswitch - 16AIAC250V	
108	0623 0140E	Spring Pin - 3x14mm	
109	0315 0080B	Philips Pan Head Screw - M5x8	
110	0720 0060Z	Retaining Ring - M6	
111	0951 4006B	Philips Screw With Washer - M4x6	
112	0701 0040B	Flat Washer - M4	
113	0701 0060B	Flat Washer - M6	
114	0712 0060B	Hexagon Nut - M6	

8. JOINT FRAME SECTION 2 (A454)



8. JOINT FRAME SECTION 2 (A454)

Index No.	Part No.	Description	Q'ty Per Assembly
1	A454 6088	Left Hook	1
2	A454 6058	Upper Stay	2
3	A454 6075	Bracket - Lower Mounting Arm	2
4	A454 6082	Lower Mounting Arm	2
5	AA14 8183	Shaft - Lower Mounting Arm	2
6	A454 6060	Left Lower Stay	1
7	AA14 8184	Shaft - Support Mounting Arm	2
8	A454 6091	Bracket - Lock Wire Arm	2
9	A454 6081	Upper Mounting Arm	2
10	AA14 8185	Lock Arm Shaft	2
11	AA05 1009	Lock Wire - Large	1
12	A454 6061	Right Lower Stay	1
13	A454 6108	Lock Pin Bracket	1
14	50130568	Roller Catch	1
15	53041639	Bushing - 8mm	12
16	AA13 2095	Collar - Lock Arm	2
17	AA13 2094	Spacer - Mounting Arm	4
18	AA06 0224	Spring - Mounting Arm	4
19	AA05 1010	Lock Wire - Small	1
20	A454 6089	Right Hook	1
21	A454 6056	Left Side Plate	1
22	A454 6055	Right Side Plate	1

Index No.	Part No.	Description	Q'ty Per Assembly
101	0720 0060Z	Retaining Ring - M6	
102	0720 0040Z	Retaining Ring - M4	
103	08025169	Tapping Screw - M4x6	
104	0313 0060B	Philips Pan Head Screw - M3x6	
105	0951 4006B	Philips Screw With Washer - M4x6	
106	0314 0060B	Philips Pan Head Screw - M4x6	

9. MAIN BOARD (A454)

CAPACITOR

SYMBOL NO.	INDEX NO.
C101	131
C102	131
C103	126
C104	126
C105	128
C106	128
C107	130
C108	130

CONNECTOR

SYMBOL NO.	INDEX NO.
CN601	103
CN603	104
CN604	102
CN605	106
CN802	105

DIODE

SYMBOL NO.	INDEX NO.
D101	110
D102	110
D103	110
D104	110
D105	109
D106	110

IC

SYMBOL NO.	INDEX NO.
IC101	115
IC102	114
IC103	116
IC104	119
IC105	118
IC106	117

PC

SYMBOL NO.	INDEX NO.
PC101	113
PC102	113

RESISTOR

SYMBOL NO.	INDEX NO.
R102	134
R103	132
R104	132
R105	133
R106	133
R107	133
R108	123
R109	123
R110	122

SYMBOL NO.	INDEX NO.
R111	122
R112	120
R113	120
R114	137
R116	138
R117	138
R118	140
R119	140
R120	140

SYMBOL NO.	INDEX No.
R121	140
R123	135
R124	135
R125	136

RAY

SYMBOL NO.	INDEX NO.
RAY101	124

TEST POINT

SYMBOL NO.	INDEX NO.
TP101	101
TP102	101
TP103	101
TP104	101
TP105	101

TRANSISTOR

SYMBOL NO.	INDEX NO.
Q101	107

VR

SYMBOL No.	INDEX NO.
VR101	125

ZENER DIODE

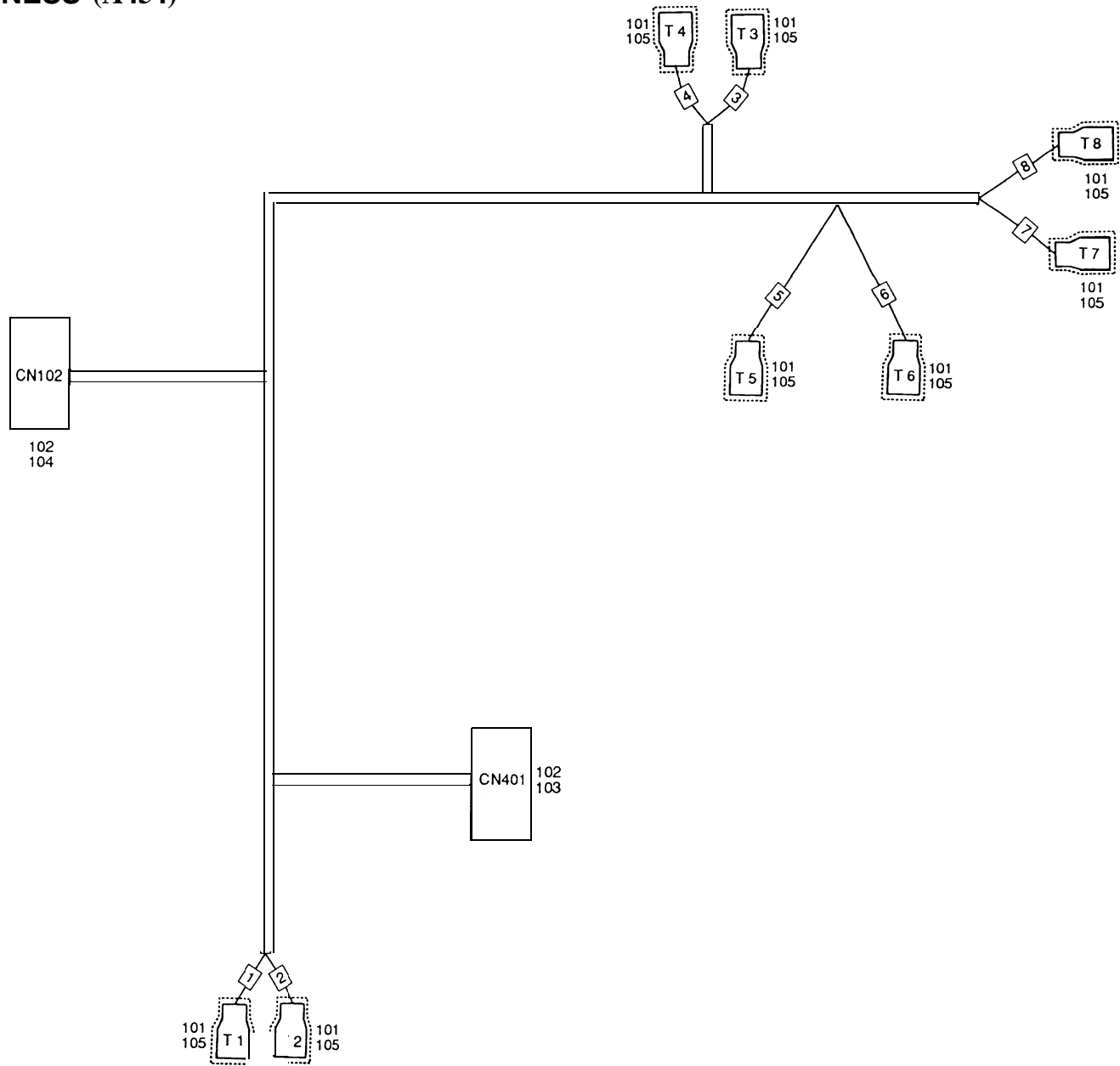
SYMBOL NO.	INDEX NO.
ZD101	111
ZD102	111

9. MAIN BOARD (A454)

Index No.	Part No.	Description	Q'ty Per Assembly
*	A454 5041	Main Control Board	1

Index No.	Part No.	Description	Q'ty Per Assembly
101	11001474	Test Pin	
102	11030881	Connector - 4P	
103	11031769	Connector - 3P	
104	11031772	Pin Header - 6P	
105	11031773	Pin Header - 7P	
106	11031778	Pin Header - 12P	
107	14000238	Transistor - 2SC2002	
109	14010815	Diode -1S1588	
110	14020073	Transistor - 2SC735Y	
m	14020486	Zener Diode - RD30FB	
113	14030222	IC - EE-CF1	
114	1407196'4	IC - TD62304AP	
115	14072273	IC - TA8050P	
116	14073217	IC - TC74HC423AP	
117	14073218	IC - SJ-7330A	
118	14080227	Regulator - 12V	
119	14080576	IC - HA1 7358	
120	16001373	Resistor - 620 Ω 1W \pm 5%	
122	16001376	Resistor - 1.5 Ω 5W \pm 5%	
123	16001385	Resistor - 4.7 Ω 10W \pm 5%	
124	16017077	Resistor Array - 10k Ω 1/8W	
125	16018139	Variable Resistor - 50k Ω 0.5W	
126	16042124	Capacitor - 1 μ F 50V \pm 20%	
128	16042134	Capacitor - 100 μ F \pm 20% 50V	
130	16050604	Capacitor - 0.1 μ F 50V	
131	16050605	Capacitor - 0.1 μ F 25V	
132	16114103	Resistor - 10k Ω 1/4T \pm 5%	
133	1611 4203B	Resistor - 20k Ω 1/4W \pm 5%	
134	1611 4204B	Resistor - 200k Ω 1/4 \pm 5%	
135	1611 4222B	Resistor - 2.2k Ω \pm 5% 1/4W	
136	16114223	Resistor - 22k Ω 1/4T \pm 5%	
137	1611 4301B	Resistor - 300 Ω 1/4W \pm 5%	
138	1611 6122C	Resistor - 1.2k Ω 1/2W \pm 5%	
140	1611 6820C	Resistor - 82 Ω 1/2W \pm 5%	

10. DC HARNESS (A454)



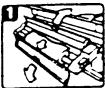
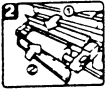
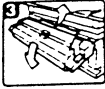






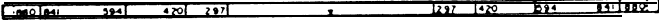

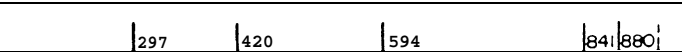
10. DC HARNESS (A454)

Index No.	Part No.	Description	Q'ty Per Assembly
*	A454 5094	DC Harness	1

Index No.	Part No.	Description	Q'ty Per Assembly
101	11000277	Fastening Receptacle	
102	11001329	Contact	
103	11021982	Socket Housing - 2P	
104	11021987	Connector - 6P	
105	11024593	Connector	

11. DECAL AND DOCUMENT (A454}



<p>1</p> <div data-bbox="293 268 607 651"> <p>Removing Misfed Paper</p>  <p>Pull Roll cutter release lever and lift up the roll cutter. Open Roll cutter front cover and rewind the roll paper.</p>  <p>Make sure the paper's leading edge is straight when reset the paper in the fixed position according to its size. Close Roll cutter front cover.</p>  <p>If the paper is left in the paper exiting part, remove it and return the roll cutter in its original position.</p> </div>	<p>2</p> <div data-bbox="741 268 1055 651"> <p>Adding Paper</p>  <p>Pull Roll cutter release lever and lift up the roll cutter.</p>  <p>Open Roll cutter front cover and take out the paper spool using both hands.</p>  <p>Remove the paper core while pushing down Paper release lever.</p>  <p>Insert the new roll paper and set its size when pushing down Paper release lever.</p>  <p>Set the paper spool in the roll cutter. Close paper guide base on the base rest roller and position the paper's leading edge according to its size. Close paper guide base and roll cutter front cover.</p>  <p>Lift up the roll cutter release lever and return roll cutter to its original position.</p> </div>	<p>4</p> 
<p>3</p> 	<p>7</p> <div data-bbox="786 986 1021 1230"> <p>CAUTION THIS UNIT HAS MORE THAN ONE POWER SUPPLY CORD. DISCONNECT TWO POWER SUPPLY CORDS BEFORE SERVICING TO AVOID ELECTRICAL SHOCK.</p> <p>ACHTUNG VOR ENTFERNEN DER RÜCKWAND ALLE NETZSTECKER ZIEHEN.</p> </div>	<p>6</p> 

11. DECAL AND DOCUMENT (A454)

Index No.	Part No.	Description	Q'ty Per Assembly
1	A454 1393	Decal - Misfed Removal	1
2	A454 1391	Decal - Loading Paper	1
3	A454 2546	Decal - Front Cover	1
4	A454 2720	Decal - Paper Spool Scale - A4	1
5	A454 1410	Left Scale Decal - A4	1
6	A454 1167	Right Scale Decal - A4	1
7	A912 2681	Caution Decal - English/French	1

Index No.	Part No.	Description	Q'ty Per Assembly